

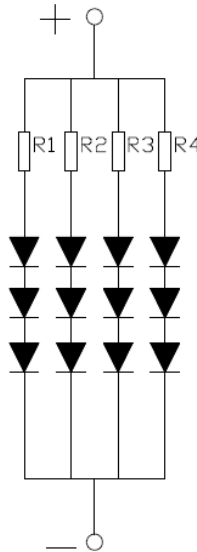
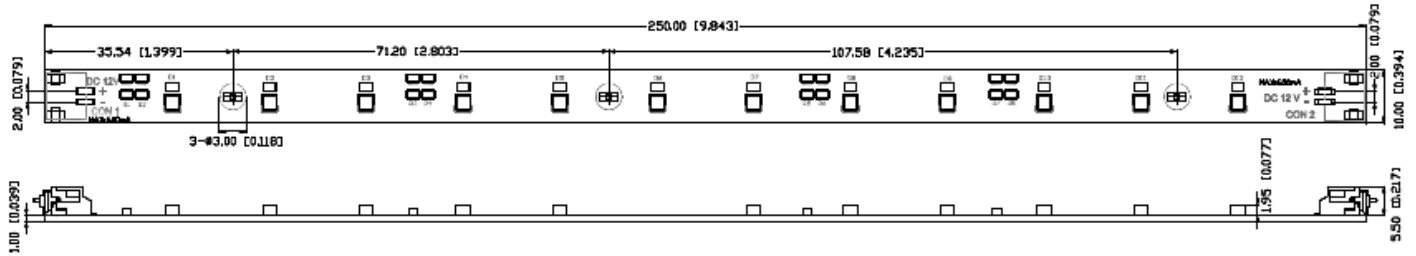


# American Opto Plus LED Corp.

## AOP-MPS251012-CW

### 250mm x 10mm MPCB 12 LED Module Light Strip

## PACKAGE OUTLINES



**Notes:**

1. All dimensions are in millimeters (inches);
2. Tolerances are  $\pm 2$ mm unless otherwise noted.
3. Connectors pitch is 2.54mm.

Part No.	Material	Emitted	Number of LEDs
AOP-MPS251012-CW	2835 SMD	Cool White	12 pcs



**American Opto Plus LED Corp.**  
**AOP-MPS251012-CW**  
**250mm x 10mm MPCB 12 LED Module Light Strip**

**OPTICAL-ELECTRICAL CHARACTERISTICS**

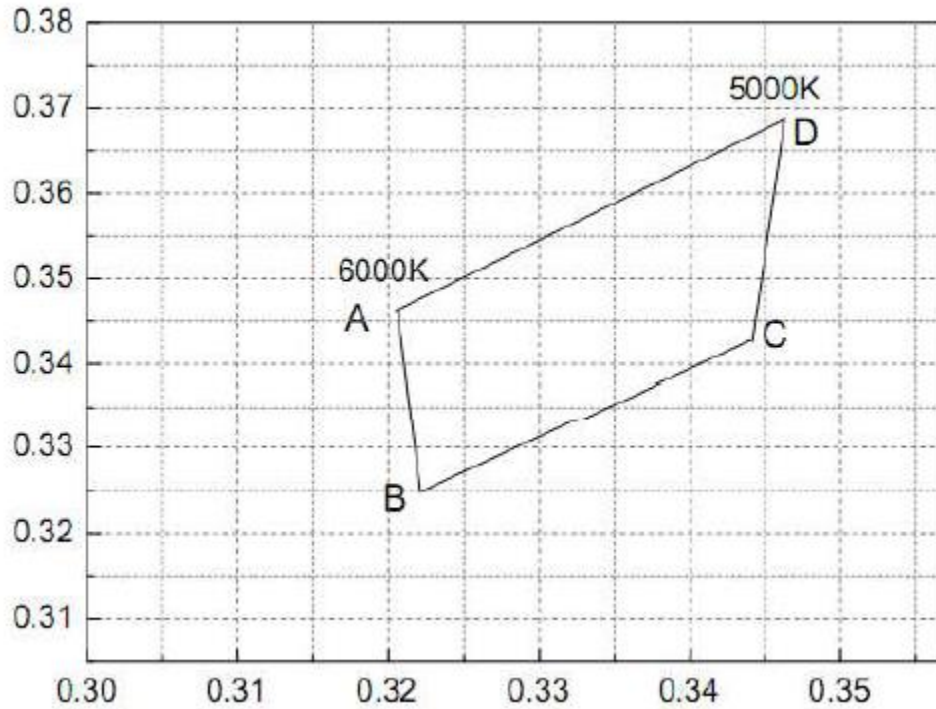
(Ta=25°C)

Parameter	Symbol	Min	Typ	Max	Unit
Viewing Angle (FWHM)	--	--	120	--	deg
DC Forward Current	I <sub>F</sub>	--	600	--	mA
Forward Voltage (I <sub>F</sub> =600mA)	V <sub>F</sub>	--	12	--	V
Luminous Flux (I <sub>F</sub> =600mA)	Φ <sub>V</sub>	--	660	--	lm
Operating Temperature	T <sub>OPR</sub>	-40~+70			°C
Storage Temperature	T <sub>STG</sub>	-40~+85			°C



**American Opto Plus LED Corp.**  
**AOP-MPS251012-CW**  
**250mm x 10mm MPCB 12 LED Module Light Strip**

**COLOR RANK LIMITS ( $I_F=600\text{mA}/450\text{mA}$ )**



Rank Color Temperature: 5600K~6000K

	CIE X	CIE Y
A	0.3207	0.3462
B	0.3222	0.3243
C	0.344	0.3428
D	0.3463	0.3687

Notes:

1. Tolerance of measurement of luminous flux:  $\pm 10\%$
2. Tolerance of measurement of color coordinates:  $\pm 0.01$