

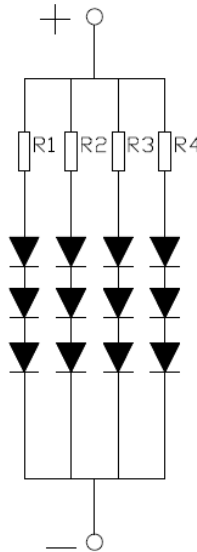
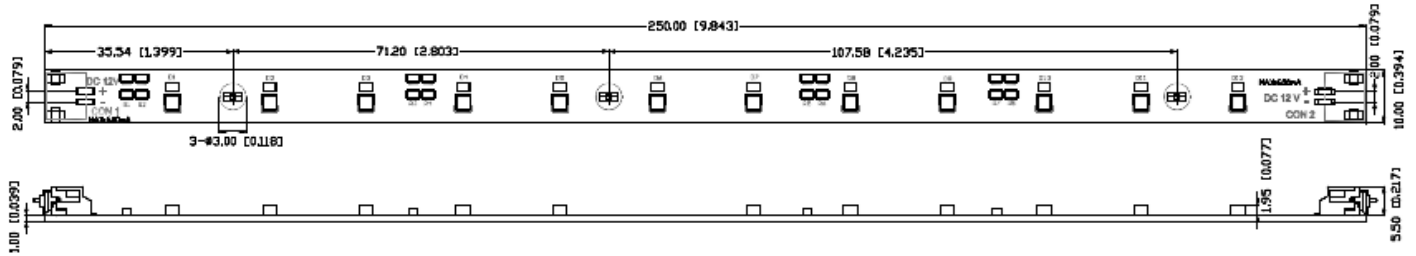


American Opto Plus LED Corp.

AOP-MPS251012-WW

250mm x 10mm MPCB 12 LED Module Light Strip

PACKAGE OUTLINES



Notes:

1. All dimensions are in millimeters (inches);
2. Tolerances are $\pm 2\text{mm}$ unless otherwise noted.
3. Connectors pitch is 2.54mm.

Part No.	Material	Emitted	Number of LEDs
AOP-MPS251012-WW	2835 SMD	Warm White	12 pcs



American Opto Plus LED Corp.
AOP-MPS251012-WW
250mm x 10mm MPCB 12 LED Module Light Strip

OPTICAL-ELECTRICAL CHARACTERISTICS

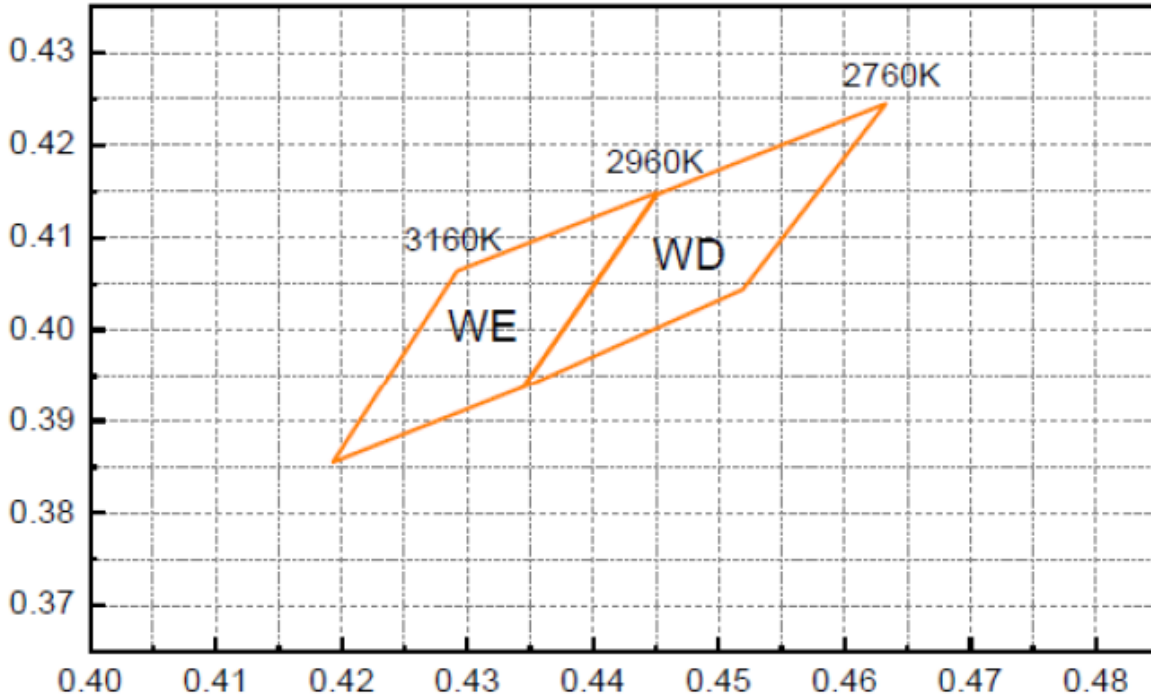
(Ta=25°C)

Parameter	Symbol	Min	Typ	Max	Unit
Viewing Angle (FWHM)	--	--	120	--	deg
DC Forward Current	I _F	--	600	--	mA
Forward Voltage (I _F =600mA)	V _F	--	12	--	V
Luminous Flux (I _F =600mA)	Φ _V	--	530	--	lm
Operating Temperature	T _{OPR}	-40~+70			°C
Storage Temperature	T _{STG}	-40~+85			°C



American Opto Plus LED Corp.
AOP-MPS251012-WW
250mm x 10mm MPCB 12 LED Module Light Strip

COLOR RANK LIMITS ($I_F=600\text{mA}/450\text{mA}$)



Rank Color Temperature: 2760K~3160K

WE		WD	
CIE X	CIE Y	CIE X	CIE Y
0.4292	0.4064	0.4451	0.4147
0.4193	0.3855	0.4344	0.3937
0.4344	0.3937	0.4519	0.4044
0.4451	0.4149	0.4633	0.4245

Notes:

1. Tolerance of measurement of luminous flux: $\pm 10\%$
2. Tolerance of measurement of color coordinates: ± 0.01